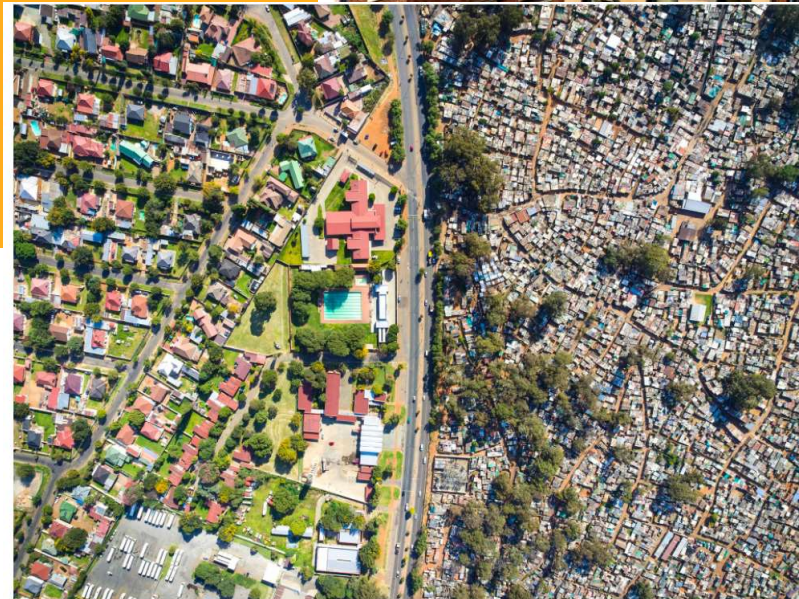
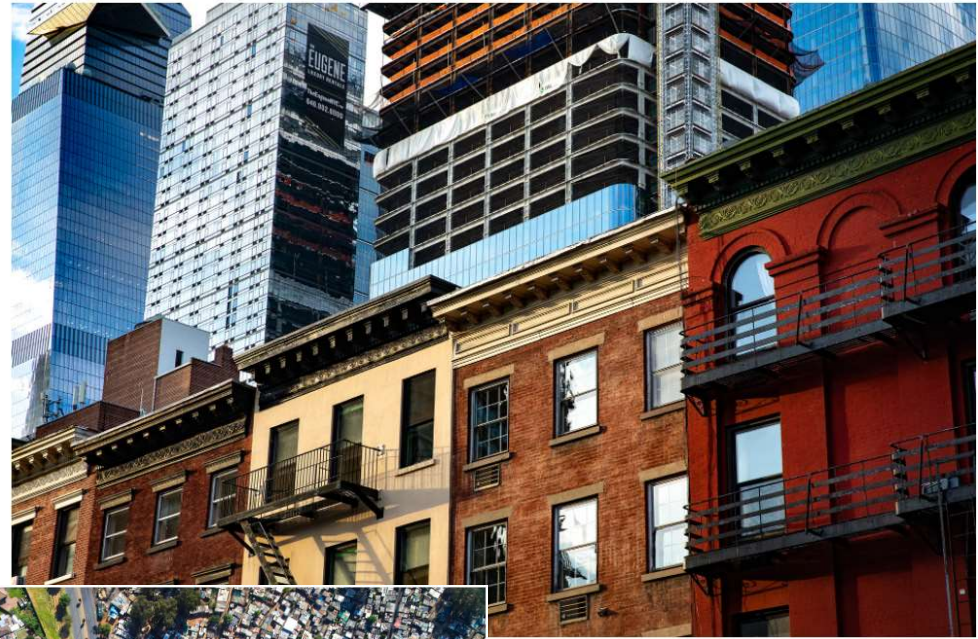


Topics 6.10

Challenges to Urban
change



Objective and Essential Learning :

Enduring Understanding – Urban Areas face unique economic, political, cultural, and environmental changes.

6.10 – Explain causes and effects of geographic change within an area

6.11 – Describe the effectiveness of different attempts to address urban sustainability challenges.

<https://youtu.be/e68CoE70Mk8>

tru^{TV}

ADAM RUINS EVERYTHING

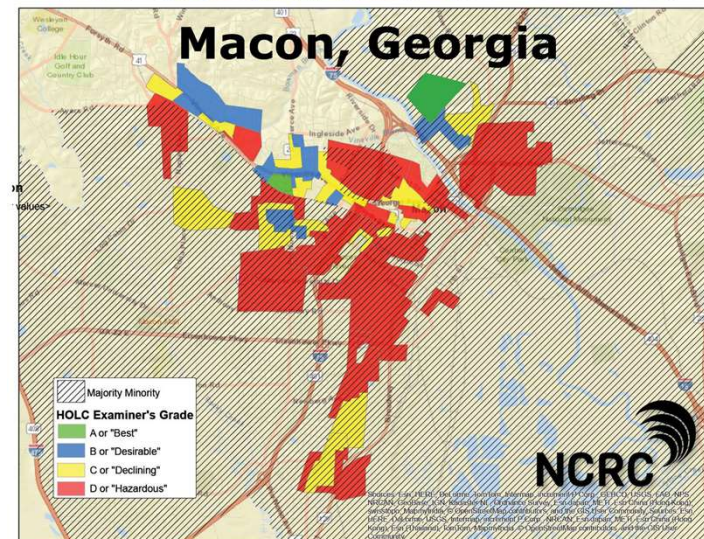
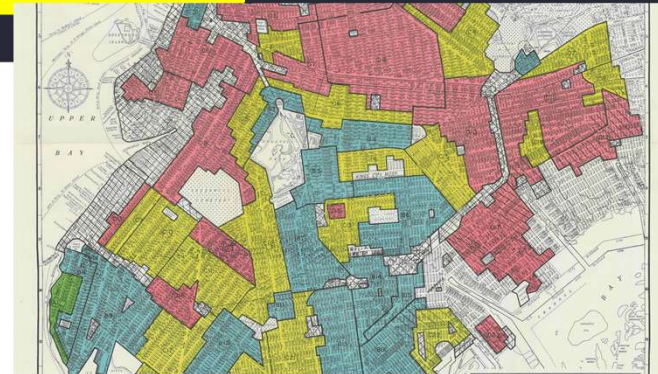


As urban populations move within a city, economic and social challenges result, including issues related to

Housing and Housing Discrimination

Redlining - a discriminatory practice in which services (financial and otherwise) are withheld from potential customers who reside in neighborhoods classified as 'hazardous' to investment (those within the “red lines”)

Policy overwhelmingly impacts low-income citizens and minorities, particularly African-Americans



[How Housing Redlining Contributed to the Racial Wealth Gap and Segregation | NowThis - YouTube](#)

As urban populations move within a city, economic and social challenges result, including issues related to

Housing and Housing Discrimination

Blockbusting - a real estate technique to encourage people to sell their property at a very low price by giving the impression that the neighborhood was changing for the worse, especially in reference to minorities moving in and led to a significant turnover in housing which benefitted real estate agents and led to the “**white flight**” to the suburbs





**Read the article on
Gentrification and answer
the questions 1 – 4**

As urban populations move within a city, economic and social challenges result, including issues related to

Urban Renewal: the redevelopment of areas within an urban area, typically neighborhoods in economic decline

Gentrification: the restoration of deteriorated urban areas by wealthier people who move into, renovate, and restore housing and sometimes businesses.



Gentrification Pro's & Cons



Negative: impact to existing groups

- Displaces poorer residents
- Disregards the needs and interests of vulnerable groups
- Disregards the lawful rights of vulnerable groups
- Disproportionately improves **quality** of life

Positive: added revenue and productivity

- New employment opportunities
- Improved housing
- Improved infrastructure
- Increase in visitors/tourism