



## 6.2: Origin & Influences of Urbanization

# New Urban Land-Uses & Challenges

The process of suburbanization, urban sprawl and decentralization have created new land uses. These also come with challenges.

- **Suburbanization:** movement of people from urban core areas to the surrounding outskirts of a city
- **Sprawl (or urban sprawl):** tendency of cities to grow outward in an unchecked manner
  - **Ex. automobile cities:** cities whose size and shape are dictated by and almost require individual automobile ownerships
- **Decentralize:** in an urban context, to move business operations from core city areas into outlying areas such as suburbs.



<https://youtu.be/NA8LQI-6sQ0>



# Processes that Initiate and Drive Suburbanization

- People moving, usually from cities to residential areas on the outskirts of cities
  - Caused in America by
    - Post WWII economic expansion
    - Car-centered lifestyle
    - 1956 Interstate Highway Act
    - Racial tensions
      - “White Flight”
      - Lack of government investment in inner cities



# New Land-Use Forms

- **New land-use forms have emerged due to suburbanization, sprawl, and decentralization**

**Edge Cities**

**Exurbs**

**Boomburbs**



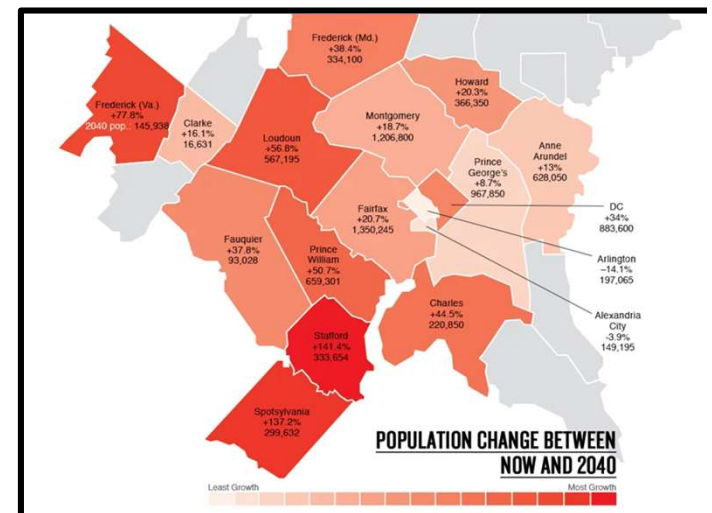
# Edge Cities

**Edge Cities:** a concentration of business, shopping and entertainment that developed in the suburbs, outside of a city's traditional downtown or central business district.

- Distinctly American
- Five Characteristics:
  1. Over 5 million square feet of office space
  2. Over 600,000 square feet of retail space
  3. Population that increases every morning and decreases every afternoon (more jobs than homes)
  4. Status as an end destination due to its businesses, entertainment, shopping and/or recreation
  5. History or not resembling a city three years prior to its establishment

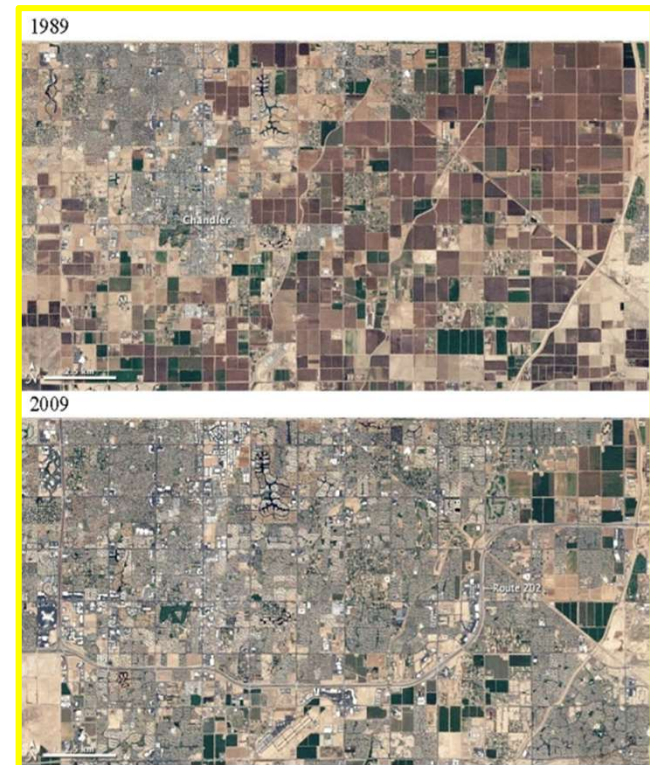
# Exurbs

- Prosperous residential districts beyond the suburbs
- Common in the US
- Outcome of counter-urbanization
  - Urban residents leaving the city
- Relatively affordable compared to cities



# Boomburbs

- Large, rapidly growing, incorporated communities of more than 100,000 residents that are not the biggest city in their region
  - Develop along a highway interchange







## Summary



An “Edge City” can be thought of as one way a city slowly expands.

An “Exurb” is a rural space that resides far enough away from an urban area that the city has little influence on its amenities or developments.

A “Boomburb” is NOT an extension of a city but a suburban space that experiences a massive population explosion that can lead to it becoming bigger than the city it sought to offer residents refuge or distance from.

